

INTERNATIONAL OPTISPRING REGATTA

OPTISPRING CHALLENGE CUP

SAILING INSTRUCTIONS

April 08th and 9th 2017, Port Zélande, The Netherlands

The regatta will be sailed on the Grevelingenmeer north east of the marina Port Zélande (NL) on April 08th and 09th 2017. The event is organized by the Dinghy Optimist Class Belgium (DOCB) in co-operation with the Royal Yacht Club of Belgium vzw.

1. RULES

- 1.1. The regatta will be governed by the rules as defined in The Racing Rules of Sailing (RRS), the class rules when applicable, except if any of these are changed by these sailing instructions, or by the Notice of Race.
- 1.2. RRS Appendix P and appendix T apply.

2. Disclaimer of liability / Risk statement

Rule 4 of the Racing Rules of Sailing states: "The responsibility for a boat's decision to participate in a race or to continue racing is hers alone."

Sailing is by its nature an unpredictable sport and therefore inherently involves an element of risk. By taking part in the event, each competitor, each parent present or not, each coach agrees and acknowledges that:

- a) They are aware of the inherent element of risk involved in the sport and accept responsibility for the exposure of themselves and their boat to such inherent risk whilst taking part in the event;
- b) They are responsible for the safety of themselves and their boat and their property whether afloat or ashore;
- c) They accept responsibility for any injury, damage or loss to the extent caused by their own actions or omissions;
- d) Their boat is in good order, equipped to sail in the event and they are fit to participate;
- e) The provision of a race management team, patrol boats and other officials and volunteers by the event organiser does not relieve them of their own responsibilities;
- f) The provision of patrol boat cover is limited to such assistance, particularly in extreme weather conditions, as can be practically provided in the circumstances;
- g) Their boat is adequately insured.

3. Rescue

- 3.1. The boats of the sailors which abandon sailing will be moored at a wreck buoy at the right hand side of the starting vessel as indicated on the chart in appendix B.
- 3.2. Coaches and parents are requested to take these sailors on board.
- 3.3. Only in case of emergency a transfer for the sailor, and for the sailor only, will be organized, Boats will remain at the buoy until the end of the last race of the day.
- 3.4. Coaches and other support boats are requested to assist the organization to bring these boats ashore after the last race of the day.

4. NOTICES TO COMPETITORS

4.1. Notices to competitors will be posted on the official regatta notice board located near the regatta office.

5. CHANGES TO SAILING INSTRUCTIONS

5.1. Any change in to these SI will be posted latest thirty (30) minutes before display of Code flag "G" on the day it will take effect, except that any change in the program as mentioned under 8.1 will be posted by 20.00 hrs on the day before it will take effect.

6. SIGNALS MADE ASHORE

- 6.1. Signals made ashore will be displayed on a signaling mast near the regatta office.
- 6.2. Code flag "G" with one (1) sound signal means: "The boats may leave their boat park and proceed to the Race Area."
- 6.3. When code flag "G" is not on display, boats are not allowed to leave the boat park, even when there are other competitors sailing.
- 6.4. Code flag "AP" with two (2) sound signals (one (1) when lowered) means: "The launching is postponed. The Warning Signal for the race will be made not less than thirty (30) minutes after the "AP" is lowered." Alters Race Signals.
- 6.5. Code Flag "AP" over a Numerical Pennant 1 – 6 with two (2) sound signals (one (1) sound signal when lowered) means "Postponement of 1 – 6 hours from the scheduled opening of the slipway". The Warning Signal will be made not less than thirty (30) minutes after "AP" is lowered. This alters race signals.
- 6.6. When code flag "L" is displayed with one (1) sound signal, a notice to competitors has been posted on the notice board.
- 6.7. There will only be one (1) numeral pennant under flag "L" indicating the number of the last change.

7. FORMAT OF RACING

7.1. When more than 160 boats are registered, the fleet will be divided in 6 groups. This division in groups will be done by the Dinghy Optimist Class Belgium, and will be no ground for redress. The groups will be announced at the official notice board, no later than 1 hour before launching. Each competitor shall check if he/she received the correct colour ribbon during registration.

7.2. The groups are named by the colour of the ribbon competitors will receive at the registration. (i.e. blue, white, green, red, orange, and yellow). The groups will start two by two following the scheme:

	Race 1	Race 2	Race 3	Race 4	Race 5	Race 6	Race 7
Start 1	Blue	White	Green	Red	Red	Red	White
	White	Green	Red	White	Blue	Blue	Blue
Start 2	Green	Yellow	White	Blue	White	White	Orange
	Yellow	Red	Orange	Green	Yellow	Yellow	Red
Start 3	Red	Orange	Blue	Yellow	Orange	Orange	Green
	Orange	Blue	Yellow	Orange	Green	Green	Yellow

7.3. The starting groups can be rescheduled, in order to minimize the change of starting order on the water. In this case an amendment will be published before 8.30 a.m. on the day of the races. The schedule and possible revised schedule is made at the discretion of the race committee, and will be no ground for redress.

- 7.4. As long as a race has not been completed (due to general recall or abandoned races), the next start will be considered as the start of the same race as the previous start.
- 7.5. Maximum 7 races will be sailed, with a maximum of 4 races per day.

8. PROGRAM AND SCHEDULE OF RACES

- 8.1. Program and schedule of races as follow.

Friday April 07	18h00-20h00	Registration Ribs Registration participants
Saturday April 08	07h30 – 09h20	Registration
	09h30	Slipway Opens (check code flag G)
	10h25	1st. warning signal of the day
		Following races as soon as possible
Sunday April 09	09h00	Slipway Opens (check code flag G)
	09h55	1st. warning signal of the day
		Following races as soon as possible
	15h30	No starts will be given after this time
		Prize giving as soon as possible after the last race

9. CLASS FLAGS

- 9.1. The traditional class flags are replaced by flags representing the colour of the groups, the fleet has been divided in.
- 9.2. All boats shall display a coloured ribbon corresponding with the colour of their group flag. This ribbon shall be attached to the top of the sprit.
- 9.3. Ashore, boats shall be parked in the boat park according to their respective country.

10. RACING AREA , STARTING AREA AND FINISHING AREA

A Race Area is defined as follows:

- 10.1. Before the Preparatory Signal: “The Race Area is the area within 100 meters of the Starting Line and the RC boats on that line.”
- 10.2. After the Starting Signal: “The Race Area is the area within an imaginary line drawn 100 meters outside any point where a boat might sail during normal racing.”
- 10.3. At the Finish: “The Race Area is the area within 100 meters of the Finishing Line and the RC boats on that line.”

11. THE COURSE

- 11.1. The diagram in appendix B shows the courses, including the approximate angles between legs, the order in which marks are to be passed, and the side on which each mark is to be left
- 11.2. No later than the warning signal, the race committee signal boat will display the approximate magnetic bearing of the

first leg.

- 11.3. The course length and the angle between legs may be adjusted to allow for current, wind and water conditions.

12. MARKS

- 12.1. The marks, incl. the marks of start and finish line (when no pin end boat is used) will be large orange cylindrical form inflatable buoys.

13. THE START

- 13.1. The starting line will be between a staff or the mast displaying an orange flag on the race committee boat at the starboard end and the Flagstaff or mast on a boat displaying a red flag or the course side of the starting mark at the port end.
- 13.2. To alert sailors that a new sequence of starts is soon to begin, an orange flag will be displayed for at least 5 minutes before the first warning signal, of the first start of the sequence.
- 13.3. For the purpose of RRS 30.1 only the Starting Line itself is considered, during the last minute before start, not its extensions (modifies RRS 30.1).
- 13.4. Boats whose warning signal has not been made shall avoid the starting area (SI 10.3). Boats starting with the wrong starting group, shall be disqualified without hearing.
- 13.5. If a flag U has been displayed as the preparatory signal, no part of a boat's hull, crew, or equipment shall be in the triangle formed by the ends of the starting line and the first mark during the last minute before her starting signal. If a boat breaks this rule and is identified, she shall be disqualified without a hearing but not if the race is restarted, or re-sailed, or postponed, or abandoned before the starting signal. This changes rule 26.
- 13.6. A boat starting later than four (4) minutes after her starting signal will be scored DNS. This changes rule A4.1.
- 13.7. RC boats may hold position by using engines; any effects shall not be grounds for granting redress. (Alters RRS 62.1).

14. THE FINISH

- 14.1. The finishing line will be between a staff or the mast displaying a blue flag on a race committee boat at the starboard end and the Flagstaff or mast on a boat displaying a red flag or the course side of the finishing mark at the port end.
- 14.2. After finishing all boats are required to leave the Race Area as soon as possible (SI 10.3).

15. RESERVE

16. PENALTY SYSTEM

- 16.1. Appendix P will apply. Although judges will signal a rule 42 penalty as soon as possible, this might sometimes be after the boat has crossed the finishing line. In the case of a boat's first protest, the boat will be given a 7 point penalty without a hearing

17. TIME LIMITS AND TARGET TIMES

- 17.1. The target time for a race is forty-five (45) minutes for all classes. Failure to meet the target time will not be grounds for redress. This changes RRS 62.1 (a).
- 17.2. Boats failing to finish within twenty (20) minutes after the first boat of her class finishes will be scored DNF. This changes RRS 35 an A4.1. If the first boat sails longer than 60 minutes, the time limit of 20 minutes will be replaced by 1/3 of the time needed by the first boat to finish the race.
- 17.3. The time limit for a race will be ninety (90) minutes for all classes.

18. PROTESTS AND REQUESTS FOR REDRESS

- 18.1. The intention to protest shall be announced to the starboard end finishing boat **IMMEDIATELY** after finishing, by mentioning the protestee. The competitor must wait for an acknowledgment from the RC. This changes RRS 61.1(a)
- 18.2. Protest forms are available at the Race Offices. Protests shall be delivered within the Protest Time Limit.
- 18.3. The Protest Time Limit is sixty (60) minutes after the last boat has finished the last race of the day. The same Protest Time Limit applies to all protests by the RC and Jury and to requests for redress. This changes RRS 61.3 and 62.2. When no further sailing on a day, the protest time lasts until 1 hour after the signal to abandon the races for that day.
- 18.4. Notices will be posted within fifteen (15) minutes of the Protest Time Limit to inform competitors of hearings in which they are parties or named as witnesses. Hearings will be held in the Jury Office.
- 18.5. Protests will be heard at the Jury rooms. Parties involved in protests (including witnesses) shall remain in the vicinity of the Jury room until the protest has been heard.
- 18.6. Notices of protests by the RC or Jury will be posted within the protest time limit to inform boats under RRS 61.1(b).
- 18.7. A list of boats that have acknowledged breaking RRS 42 or have been disqualified by the Jury will be posted on the local notice board.
- 18.8. Breaches of instructions 14 (boat in Starting Area), 21 (Safety), 22 (Replacement), 26 (Support), 27 (Trash disposal) and 31 (Radio Communication) will not be grounds for a protest by a boat. This alters RRS 60.1(a). Penalties for these breaches may be less than disqualification if the Jury so decides.
- 18.9. On the last day of the regatta a request for reopening a hearing shall be delivered: (This changes RRS 66):
 - within the Protest Time if the party requesting opening was informed of the decision on the previous day;
 - no later than thirty (30) minutes after the party requesting reopening was informed of the decision on that day.
 - If there is no racing on the last day of the regatta the time limit for a request for reopening is within protest time.

19. SCORING

- 19.1. The Low Point scoring system of Appendix A of RRS will apply
- 19.2. When fewer than four (4) races have been completed, a boat's series score will be the total of her race scores.
- 19.3. If the fleet is split into groups:
 - 19.3.1. If fewer than the scheduled number of Races are completed, the score shall stand after the last race in which all groups competed.
 - 19.3.2. If starting groups have an unequal number of participants, boats will be scored on basis of the number of competitors of the largest registered starting group.
- 19.4. Add to rule RRS A11: ARB means scoring penalty after arbitration, PTS means scoring penalty for yellow flag after finish and DPI means a discretionary penalty imposed according to the "graded penalty system".

20. SAFETY REGULATIONS

- 20.1. The safety of a boat and her entire management, including insurance, shall be the sole and inescapable responsibility of the owner or entrant racing the yacht.
- 20.2. ALL PARTICIPANTS SHALL WEAR AN ADEQUATE PERSONAL FLOATING DEVICE ALL TIMES WHILE AFLOAT. WET SUITS OR DRY SUITS ARE RECOMMENDED BUT DO NOT CONSTITUTE ADEQUATE PERSONAL BUOYANCY, changing RRS 40
- 20.3. All boats shall have aboard an eight (8) m length tow rope, strong enough to tow several boats.
- 20.4. Boats are only allowed to go afloat via the official slipway. Participants shall follow the instructions of the harbour

master or his assistants, the beach master and the organizing authority at all times.

- 20.5. All participants receive an Identification Badge at registration. This Identification Badge shall be handed in at the Beach Master's cabin, after hoisting code flag G and only when one plans to go afloat. Each participant is expected to claim his badge immediately when coming ashore, at the same place, or in absence of the beach master, at the regatta office.
- 20.6. A lost Identification Badge must be renewed and shall cost 5 EUR.
- 20.7. In addition to RRS 60 any participant who fails to give this Identification Badge to the Beach Master before leaving to the Racing Area will be scored "DNC" for the races of that day and any participant who fails to collect back his Identification Badge at the slipway immediately after the races will be scored "DSQ" for the races of that day.
- 20.8. A boat that retires from a race, or that does not start a race although on the water, shall notify the RC as soon as possible.
- 20.9. When any Race Committee Boat and/or the Race Committee Signal Boat has lighted a white hand-flare, or when on these boats Code flag "W" is on display, all coaches and support boats have to enter the race area and shall cooperate with the race committee in rescue assistance.
- 20.10. Sailors who abandon racing are not allowed to sail back to the harbor; instead they are requested to leave their boats at the wreck buoy (appendix B), and to join coaches or supporters on the supporting boats. Only in case of emergency sailors will be brought ashore, without sailing boat. Spectators are requested to take these sailors on board and to assist rescue to bring boats ashore, after racing.

21. REPLACEMENT OF CREW OR EQUIPMENT

- 21.1. Substitution of damaged or lost equipment will not be allowed unless approved by the RC. Requests for substitution shall be made to the RC at the first reasonable opportunity.

22. EQUIPMENT AND MEASUREMENT CHECKS

- 22.1. A boat or equipment may be inspected at any time for compliance with the class rules and SI. On the water, a boat can be instructed by a RC Measurer to proceed immediately to a designed area for inspection.
- 22.2. Special attention will be taken at the IODA safety regulations.
- 22.3. Boats shall carry on the sail the letters and numbers issued by the national class association.

23. BOAT PARK

- 23.1. Participants only have access to the boat park after registration.

24. OFFICIAL BOATS

- 24.1. Jury boats will fly a flag marked "JURY"
- 24.2. Rescue boats will fly a red flag with a number
- 24.3. Race committee boats will fly a flag marked "RC"
- 24.4. Race committee signal boat will fly a code flag "R".

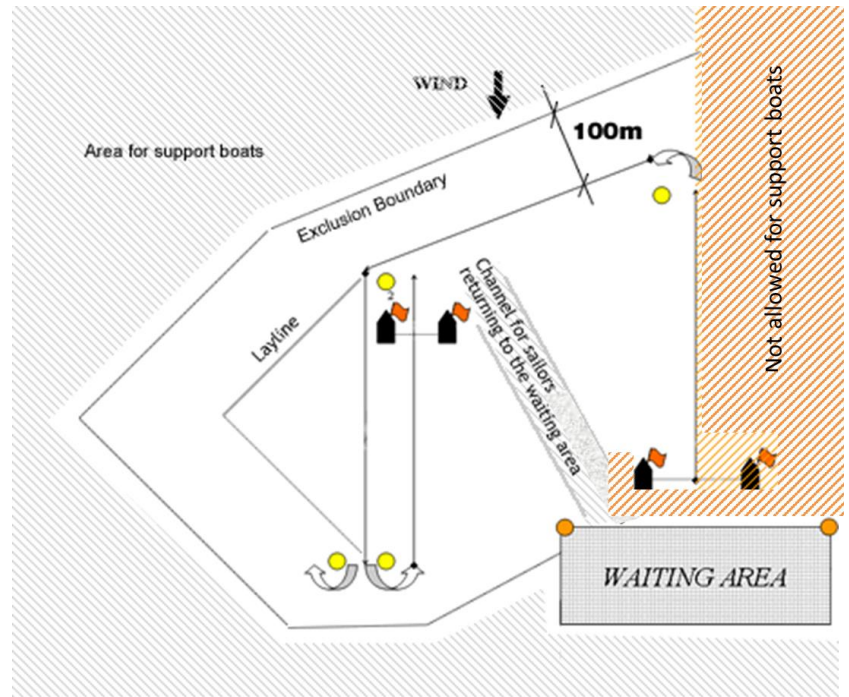
25. SUPPORT BOATS

- 25.1. Team leaders and/or representatives shall register in advance by using the "Support boat"-form on our website www.optispring.be. They will receive a numbered flag supplied by the organizing authority after **paying a fee of 10 €** which will be returned at the end of the regatta.

25.2. Each coach/team leader shall conspicuously fly the numbered flag supplied by the organizing authority and his/her national flag. This last may be replaced by a sign on his/her boat of at least 50 x 50 cm with the national letters of the country he/she represents.

25.3. Team leaders, coaches and other support personnel shall stay outside the race area (SI 10) from the time of the Preparatory Signal for the first group to start until all boats have finished or the RC signals a Postponement, General Recall or Abandonment. (See Chart below)

25.4. The penalty for failing to comply with this requirement may be the disqualification of all boats associated with the infringing support personnel. In case of Postponement, support boats may reenter the Racing and Starting Area and competitors and non-competitors may communicate until the new Preparatory Signal is given



25.5. All Support boats shall participate in rescue activity as described in 20.9 and 20.10

25.5. All Support boats shall participate in rescue activity as described in 20.9 and 20.10

26. TRASH DISPOSAL

26.1. Boats shall not put trash in the water. Trash may be placed aboard support and race committee boats. Failure to comply may be ground for penalties.

26.2.

27. RESULTS

27.1. Results will be available on www.optispring.be as soon as possible after the event.

28. RADIO COMMUNICATION

28.1. A boat shall neither make radio transmissions while racing nor receive radio communications not available to all boats. This restriction also applies to mobile telephones.

29. PRIZES

29.1. Prizes will be awarded to:

- the first 10 competitors
- the 1st, 2nd and 3rd Benjamin (°2005 or later)

29.2. The Optispring Challenge Cup is the challenge trophy that will be awarded to the team of the country with the best total team score. The total team score is calculated from the cumulated end results (we calculate the points not the places) off the first individual three sailors from each country. The Optispring Challenge Cup is perpetual.

30. ORGANIZATION

30.1. Race Committee

Van den Bossche	Peter	PRO/IRO
Neuman	Tomi	NRO
Driebeek	David	NRO
Gillard	Pierre-Philippe	NRO
Van Rijn	Kees	NRO
Cornelissen	Marc	NRO
Rogiers	Eddy	NRO

30.2. Protest Committee

De Smedt	Vic	IJ/NRO
Sledsens	Dirk	NJ/NRO
Owens	Robert	NJ (GBR)
Charlier	Paul	DJ/NRO
Laumans	Patrick	DJ
Kieft	Hans	NJ (NL)

30.3. Organizing Committee

Joris VandenBerghe Event Organizer

Boris Pintelon Secretary/ Treasurer

Board DOCB Wouter Borghijs, Frank Keppens, Ann Larsen, Klaas Boone, Leen Ronsyn, Frank Damman

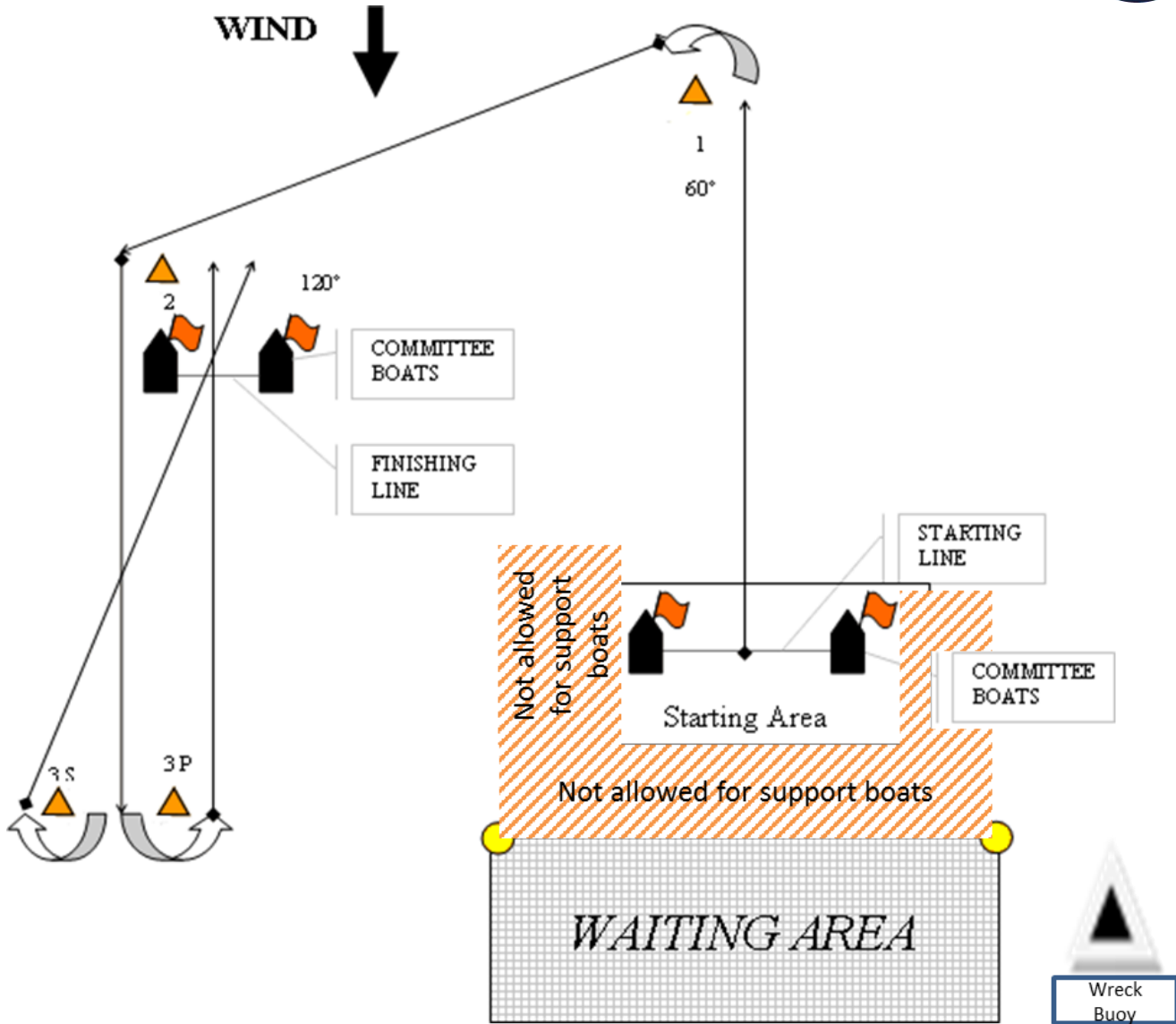
30.4. Medical staff

First Aid staff - Paramedic Joke Ronsyn, standby on-site on Saturday and Sunday.: VHF, +32 474 317382

Medic (local GP) +31(0) 111 691280

Medic: Local GP dispatch 0900 1585

Emergency 112



Appendix B - THE COURSES

IODA: Start, 1, 2, 3P/ 3S as gate, and finish